

ANC-30 Accordion Door

Soundproof accordion-type side folding panels suspend from a single overhead track to form a temporary wall in any type of opening.

- **Sound Blocking Insulation:** For maximized sound control, the Soundproof Accordion Door's double panel construction is lined with continuous blankets of sound absorbing material. This system has been independently tested to provide a STC rating of 45 per ASTM E90
- **Concealed Storage:** Designed to stack at a fraction of their extended width, the accordion panels can retract out of sight into a recessed side wall pocket
- **Smooth Glide Operation:** Panels are track-supported by a smooth glide nylon wheel and ball bearing roller assembly
- **Durable Design:** Panels are coated with a scratch resistant, permanently bonded vinyl finish that offers a high level of impact resistance

Modular Construction: Allows for simple, in-place, cost effective installation and service



Dimensions

- **Available Sizes:** 3'6" to 22' H to a maximum of 1600 ft²
- **Stack Area:** 2" per foot of width + 7" (for units over 14' H, minimum stack is 43")
- **Hang Weight:** 4.5 lbs per ft², extended

Configuration

- **Track:** Soundproof Accordion Door panels are supported by a heavy duty extruded aluminum track. Multiple mounting styles are offered for varying header construction based on available ceiling and clearance space
- **Panels:** The continuous length, 4 1/2" wide dual wall panels are coated with a scratch resistant vinyl clad 24 gauge steel, corrugated and reinforced with double rolled end beads for strength and resilience
- **Sound Blocker Lining:** Both interior panel surfaces are fitted with continuous blankets of sound-absorbing material securely attached to ensure lasting, effective retention of the sound liner
- **Hinges:** Full height extruded vinyl hinges are rugged for lasting performance and allow for simple panel replacement with units mounted in place. These hinges can be color matched to wall panels
- **Lead Post:** A heavy duty extruded aluminum post fitted with grip-type handles provides operational support and hook-bolt connection that will close the panels securely. If you require additional security, keyed locking is an available option



How to Measure for an Accordion Door

All measurements for lead posts, panel sections and hinge heights are made by measuring from the bottom to the top of the metal portion of the leadpost or panel. Do not include sweeps, trolleys or track in the measurements. Measure to the nearest 1/8".

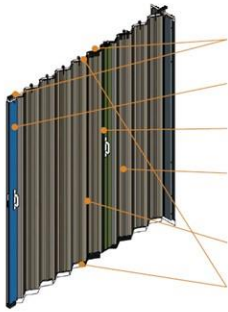
The general rule is "metal to metal" on panels and lead posts. Hinges are measured from the panels they attach to.

Technical Details



Product Breakdown

STANDARD COMPONENT MATERIALS AND FINISHES



- TRACK** - Heavy-duty extruded aluminum or steel supports and retain the roller assemblies.
- ROLLERS** - Every other panel is fitted with a nylon wheel, ball bearing roller for added wall panel support and smooth operation. Lead posts are fitted with heavy-duty trolleys featuring multiple sets of dual rollers.
- LEAD POST** - Heavy-duty extruded aluminum with powder coated finish to complement wall panels. Grip-type handles provide operational support and hook bolt connection to strike posts. Keyed locking is optional.
- STRIKE POST** - Heavy duty extruded aluminum with hook bolt strike to seal tight with the lead post. Powder coated finish complements wall panels.
- PANELS** - Continuous, single-wall, roll-formed corrugated steel for impact resistance. The public side features permanently-bonded, scratch-resistant, decorative vinyl in one of three stock finishes: Almond Embossed Weave, Driftwood Embossed Weave and Vanilla Cream Embossed Leather. The other side is painted in Platinum Gray.
- HINGES** - Full height extruded vinyl hinges are rugged for lasting performance and allow for simple panel replacement with units mounted in place. Color matched to complement wall panels.
- HEADER/FLOOR SWEEPS** - Flexible extruded vinyl seals are attached to the top and bottom of the panels to eliminate gaps at the floor and head.
- END MEMBER POST** - Used to attach the stack side(s) of the unit to the wall jamb to provide a full height, secured and sealed fit.

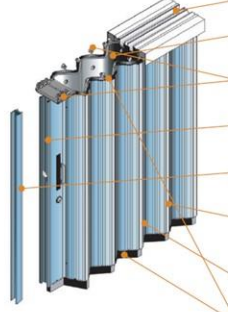
OPERATION

Manual operation required.

OPTIONAL FINISHES

Other panel finishes are available, such as Colonial Green Embossed Weave and Steel Gray Embossed Leather, but may require additional lead time and/or cost.

STANDARD COMPONENT MATERIALS AND FINISHES



- TRACK** - Heavy-duty extruded aluminum or steel supports and retains the roller assemblies.
- SOUND-BLOCKER LINING** - Both interior panel surfaces are fitted with a continuous covering of sound-absorbing material to ensure lasting, effective sound performance.
- ROLLERS** - Every other panel is fitted with a nylon wheel, ball bearing roller for added wall panel support and smooth operation. Lead posts are fitted with heavy-duty trolleys featuring multiple sets of dual rollers.
- LEAD POST** - Heavy-duty extruded aluminum with powder coated finish to complement wall panels. Grip-type handles provide operational support and hook bolt connection to strike posts. Keyed locking is optional.
- STRIKE POST** - Heavy duty extruded aluminum with hook bolt strike to seal tight with the lead post. Powder coated finish complements wall panels.
- PANELS** - Continuous roll-formed corrugated steel for impact resistance. Features permanently-bonded, scratch-resistant, decorative vinyl in one of three stock finishes: Almond Embossed Weave, Driftwood Embossed Weave and Vanilla Cream Embossed Leather.
- HINGES** - Full height extruded vinyl hinges are rugged for lasting performance and allow for simple panel replacement with units mounted in place. Color matched to complement wall panels.
- HEADER/FLOOR SWEEPS** - Flexible extruded vinyl seals are attached to the top and bottom of the panels to eliminate gaps at the floor and head.
- END MEMBER POST** - Used to attach the stack side(s) of the unit to the wall jamb to provide a full height, secured and sealed fit.

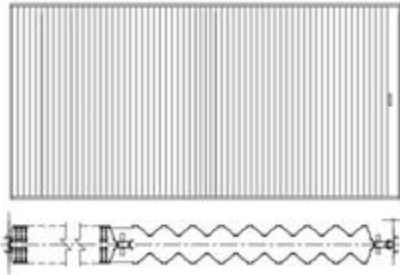
OPERATION

Choose from manual or motor operation.

OPTIONAL FINISHES

Other panel finishes are available with extended lead times at no added cost. Custom finishes are available with extended lead time and additional cost.

STABILIZER BAR SUPPORT - Provided with all motorized units and for units greater 12' tall or when greater than 30' wide. Concealed, internally-mounted diagonal support is positioned from an independent trolley to the lead post to provide reinforced vertical alignment during operation and latching.



HEAD DETAILS - STRAIGHT DOOR - MANUAL OPERATION



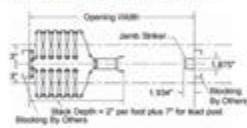
GUIDE CONSTRUCTION OPTIONS

DOOR PROFILE WIDTH

- Manual Doors**
Below 12' high or < 250sq ft
 - Stacked width: 11.56"
 - Extended width: 10.25" to 10.875"
- Motorized and Manual Doors**
Above 12' high or 250 sq ft:
 - Stacked width: 13.56"
 - Extended width: 12.25" to 12.875"

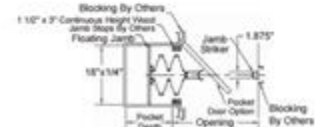


PLAN VIEW: SINGLE SLIDE, FIXED JAMB

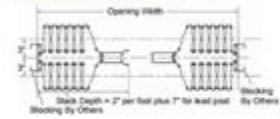


PLAN VIEW: SINGLE SLIDE, FLOATING JAMB

- Pocket depth = 2" per foot of opening
- Pocket foot of width = 10"

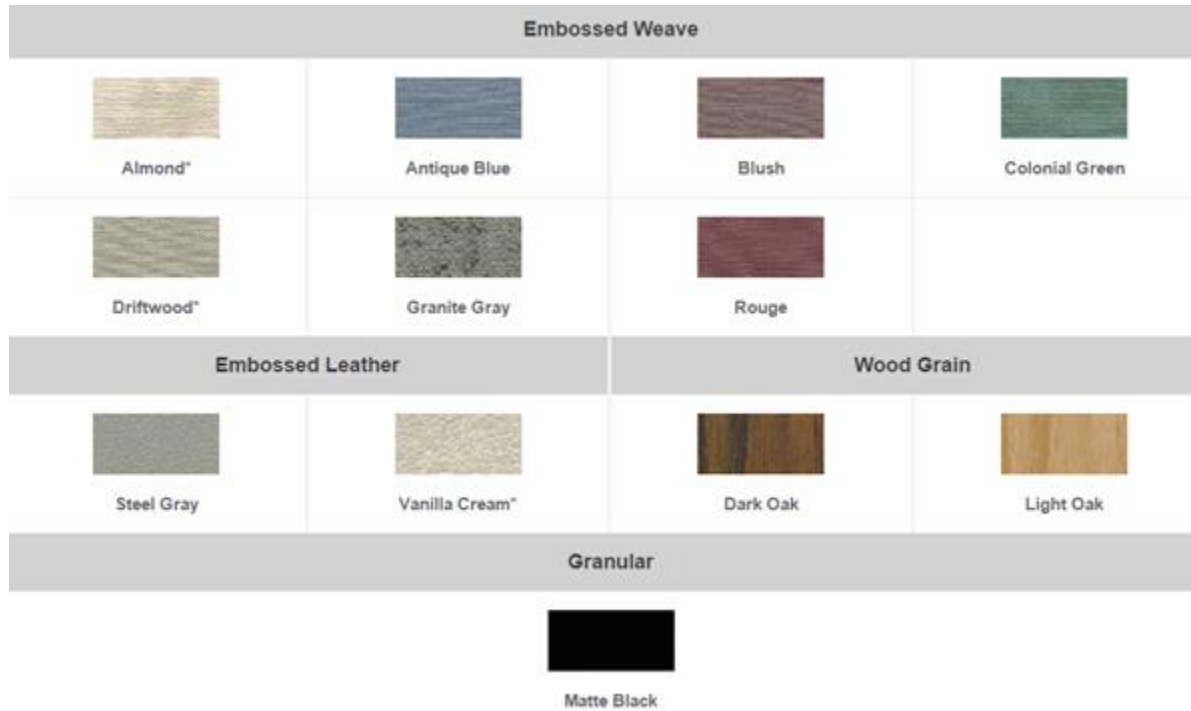


PLAN VIEW: BI-PARTING, FIXED JAMB



The dimensions featured on this sheet are provided as a guide. Please contact the factory for exact dimensions for your closure.

Options: colors and Finishes



Safety and Protection:

Locking options

- Padlockable Slide Bolts
- Padlockable Chain Keepers
- Masterkeyable Cylinder Locks

